



Software Solutions

Follow the rules. Exceed the standard.

ec2software.com

400 Apgar Drive, Suite I, Somerset, NJ 08873

P: 800 851 0025 F: 732 356 8746

E: info@ec2software.com



BIODOSE

BioDose

Version 16

Network User Installation

New User Guide

This installation guide is intended for customers who are installing BioDose for the first time.

Included are the recommended hardware specifications and sample screens to guide you through the installation process.

Introduction

Welcome

Thank you for purchasing the BioDose program. The following pages will guide you through the installation process. If you need help at any time during the installation, please call us at 1-800-851-0025. We appreciate your business and look forward to serving you.

Table of Contents

Introduction	2
Hardware requirements	3
Pre-installation.....	4
Server installation instructions.....	5
Workstation installation instructions	10
Software registration	13
Setup instructions.....	14

Hardware requirements

Following are the requirements to run BioDose for a network user license. We know this is boring, but it is important! Please check to be sure your hardware meets these requirements. Not sure? Give us a call at 800-851-0025 and we'll be happy to review your hardware with you.

Server Hardware

Processor	Intel Core 2 Duo or better
Memory	4GB RAM
Hard Drive	160 GB
Optical Drive	DVD for software installation
Backups	External hard drive, USB flash drive or shared network folder

Workstation Hardware

Processor	Intel Core 2 Duo or better
Memory	4GB RAM
Hard Drive	160 GB

Operating System

Any one of the following:

Windows Server 2012
Windows Server 2008
Windows 10
Windows 8
Windows 7

-and-

Internet Explorer

Internet Access

Required for:

Downloading periodic program updates
Accessing BioDose remote support
Online ordering where available

Pre-installation checklist

Before you begin


Making sure that your hardware is adequate to run BioDose is extremely important. If you haven't done so already, please check the hardware requirements on page 3.

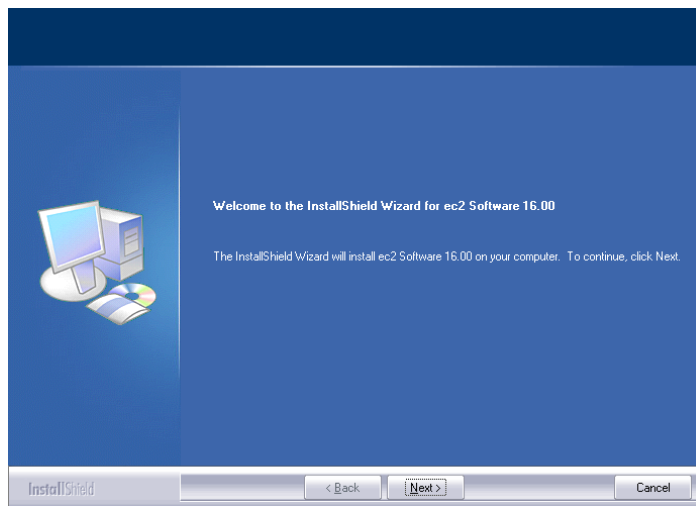
You should have received the BioDose 16.x DVD along with this installation guide. Check to see that the facility name on the disk is correct. If for some reason it is not, please call technical support at 1-800-851-0025 before proceeding.

Important points

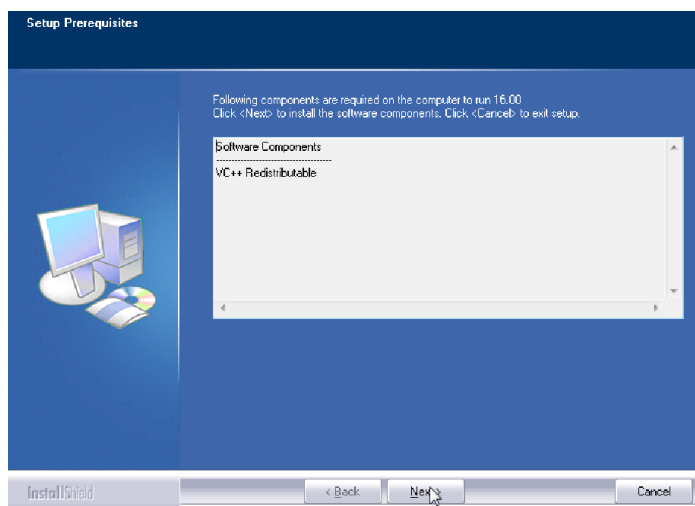
1. Shut down any programs that are running. Antivirus software can slow down the installation or prevent it from finishing. Disable any screen savers that could disrupt the installation.
2. The software installation could take up to 60 minutes. Please give yourself plenty of time to complete the process.
3. You will be asked to restart your computer several times during the installation. Please restart whenever requested to do so.
4. You must be logged in as an administrator to install BioDose. It is important that you use the same administrator login after each restart until the program tells you the installation was successful.

Server installation instructions

1. **Insert the disk** labeled with your facility name and “BioDose Version 16.x” into the disk drive.
2. Double click on **Computer** on the Desktop and locate the disk drive. Look for the label `ec2_16xx_Cust#xxxxxx` and double click on it.
3. You will see a list of files. Find **Setup.exe** and double click on it. The icon will look like this: 
4. First you will see a Welcome message. Click **Next** to continue.

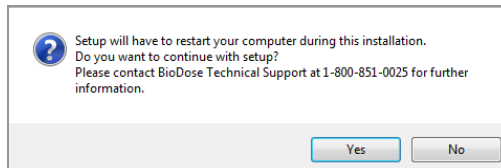


5. The install program will now examine your computer to see if any of the required components are missing. If there are no required components missing, you will skip ahead to step 8. If there are missing components, the program will show the following screen listing the items:

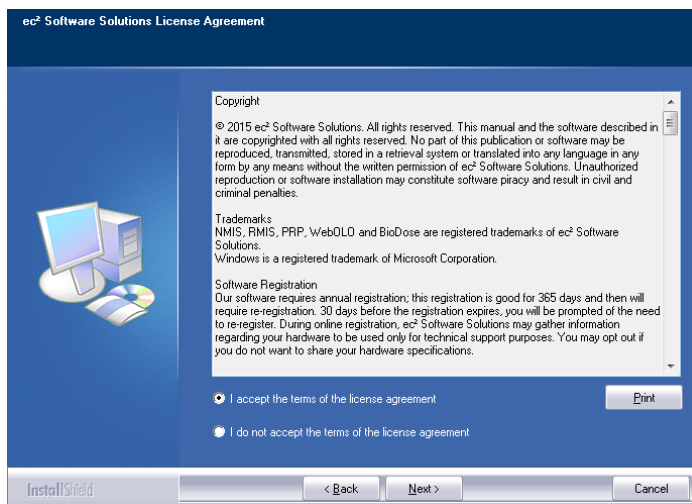


Server installation - continued

- The list of missing components may contain 1 or many items. The installation program will attempt to install all of them for you if possible. Click **Next** to proceed. At this point we will not show all of the screens that you will see when installing the missing components, since it will be different for everyone. Just follow the screen prompts and restart when necessary. Please click **Yes** to proceed.

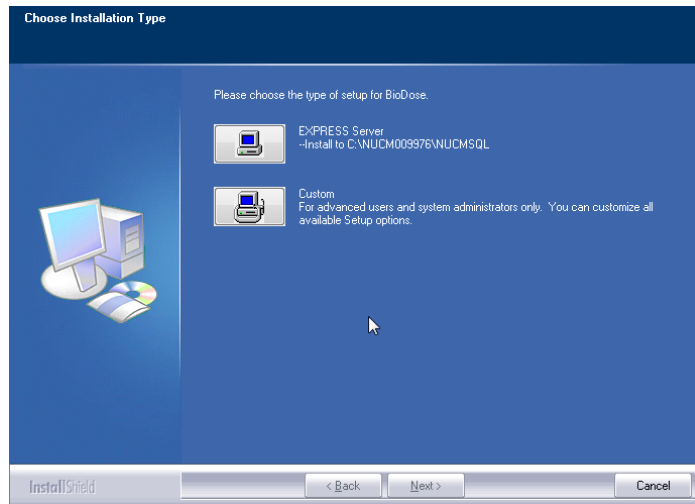


- Once all of these components are installed, you will see the Welcome screen again. Click **Next** to proceed.
- The license agreement will be displayed next. Please click on the button to accept the agreement, then click **Next** to continue.



- The program will now prompt you to choose the type of installation to be performed. Select **Express Server** to proceed.

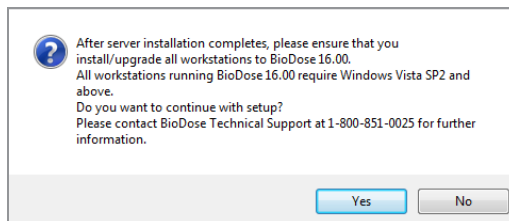
Server installation - continued



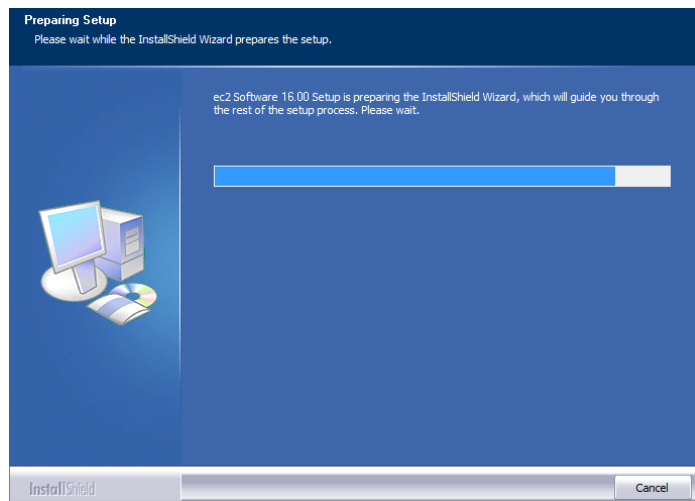
10. Setup will warn you that restarting the computer will be

necessary. Click **Yes** to continue.

11. Next you will see a message reminding you to install the workstations after you finish the server installation. Click **Yes** to proceed.



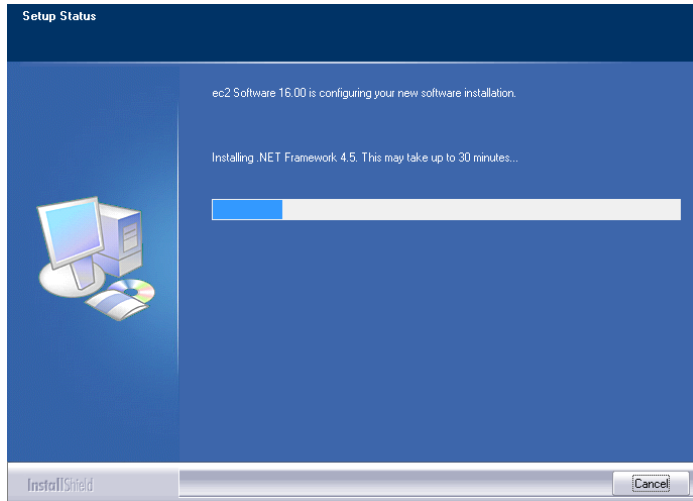
12. The program will now begin copying files and you will see several windows similar to this:



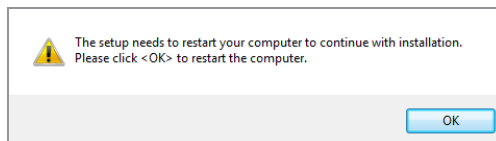
12. Next the program will install the .NET framework. This part of the installation could take 15-30 minutes.

Server installation - continued

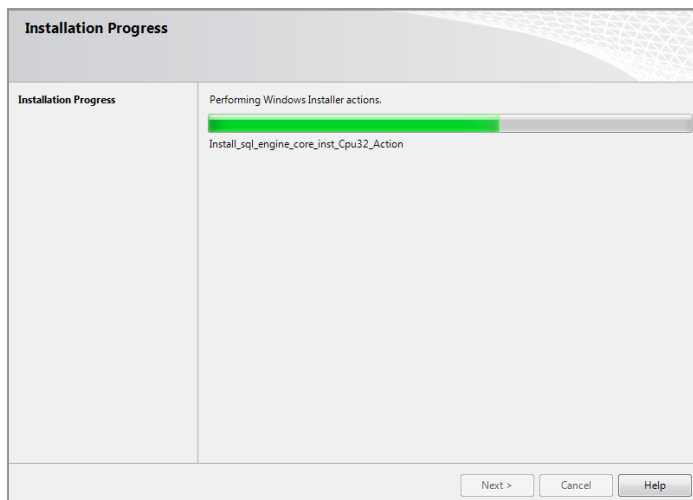
13. Next the program will install the .NET framework if it is not already installed on this computer. **This part of the installation could take 15-30 minutes.** Please be patient and let it finish.



14. When this process is completed, you may see this screen prompting you to restart the computer. Please click **OK** to continue.

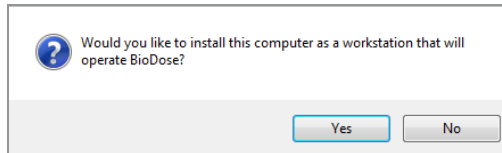


15. After restarting the installation program will continue. If your computer asks you for your user name and password when it starts up, it is very important that you use the same user name when the computer restarts.
16. Next the program will install the database. You will see many screens come and go automatically. **This may take up to 30 minutes.**

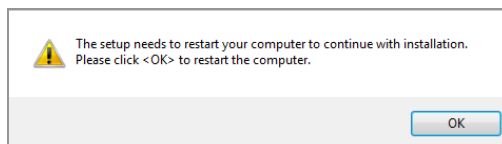


Server installation - continued

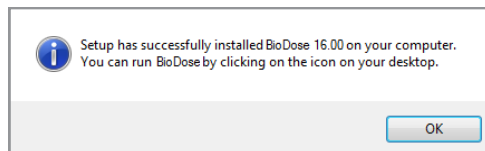
17. Once the database is installed you will get the option to install this computer as a workstation. If someone will actually be using this computer to enter data, then answer **Yes** and continue with the next step. If this is a dedicated server and no one will be using it to enter data, answer **No** and proceed to step 20.



18. When the workstation installation is complete, you will see this screen prompting you to restart the computer. Click **OK**.



19. After restarting the installation program will continue. The installation will pick up where it left off and will show you this message when it has finished:

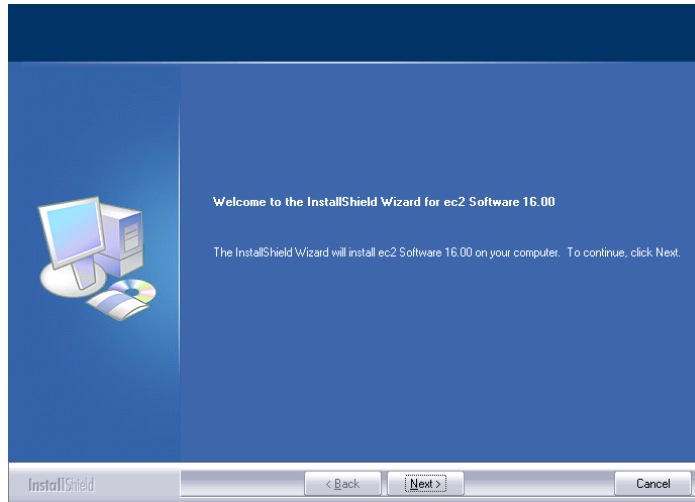


20. Click **OK** on this screen. If you elected to make the server a workstation, you may now run BioDose 16.x by clicking on the desktop icon. Follow the instructions starting on page 10 to install any additional workstations. The first time you run the program from any workstation it will ask you to register the software. The registration process is explained in greater detail on page 13. If you are adventurous, you can start setting up your databases. Information about getting started is on page 14.

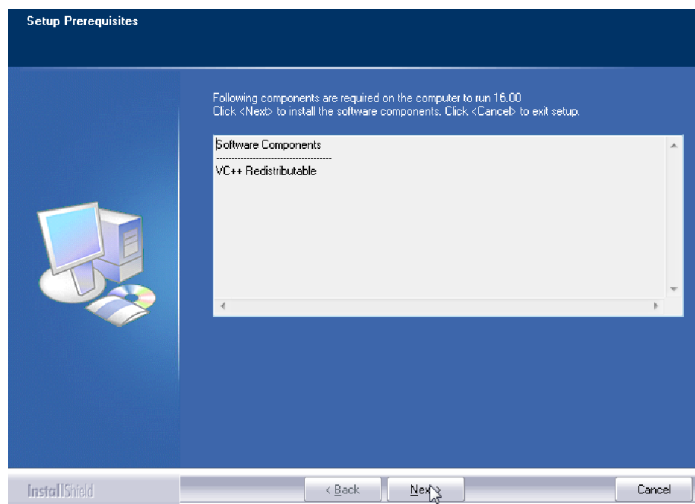
Workstation installation instructions

PLEASE NOTE: YOU WILL NOT USE THE SOFTWARE DISK TO INSTALL THE WORKSTATIONS.

1. Browse to the server and find the folder \\Server\NUCM##### \NUCMSQL \NUCMInstallCD. Double click on the **Setup.exe** contained in this folder.
2. Next you will see a Welcome message. Click **Next** to continue.



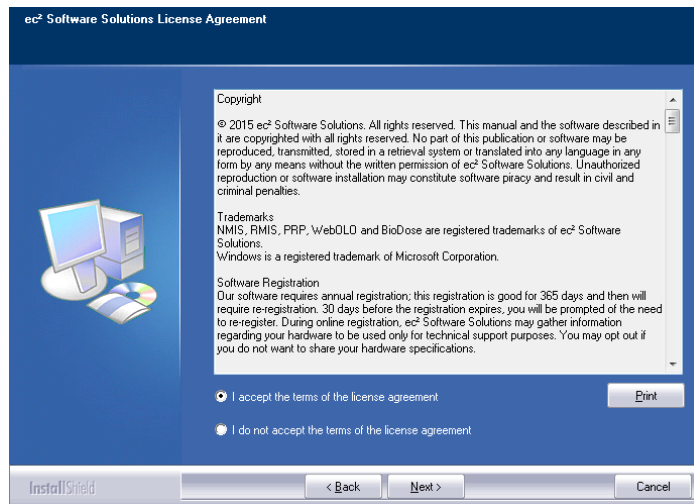
3. The install program will now examine your computer to see if any of the required components are missing. If there are no required components missing, you will skip ahead to step 6. If there are missing components, the program will show the following screen listing the items:



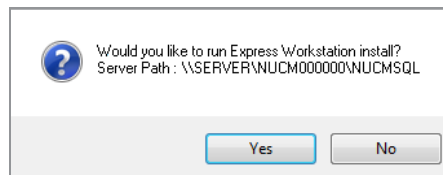
4. The list of missing components may contain 1 or many items. The installation program will attempt to install all of them for you if possible. Click **Next** to proceed. At this point we will not show all of the screens that you will see when installing the missing components, since it will be different for everyone. Just follow the screen prompts and restart when necessary. Please click **Yes** to proceed.

Workstation installation - continued

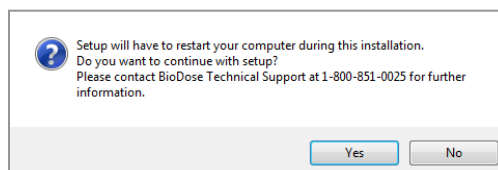
- Once all of these components are installed, you will see the Welcome screen again. Click **Next** to proceed.
- The license agreement will be displayed next. Please click on the button to accept the agreement, then click **Next** to continue.



- The program will now prompt you to run the **Express Workstation** installation. Please click **Yes** to continue.

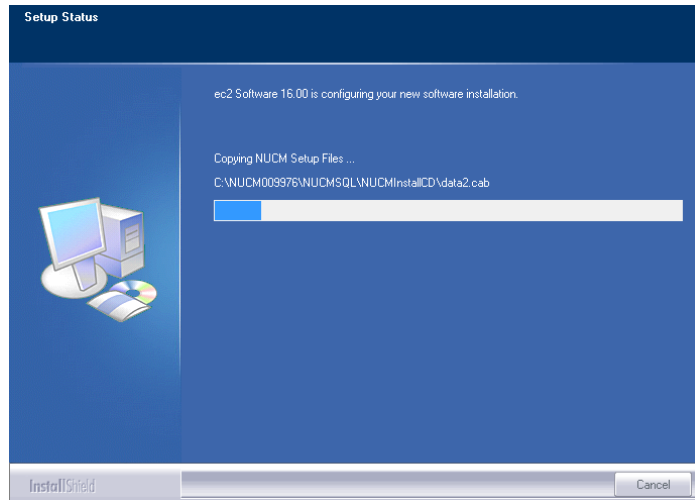


- Setup will warn you that restarting the computer will be necessary. Click **Yes** to continue.

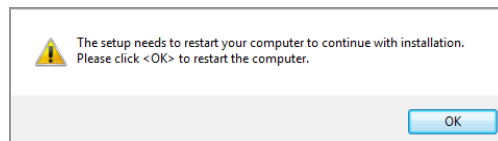


Workstation installation - continued

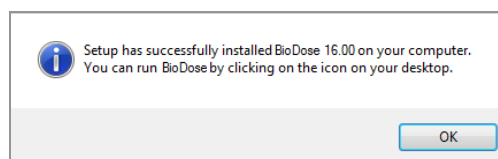
9. The program will now begin copying files and you will see several windows similar to this:



10. When the process is complete, you will see this screen prompting you to restart the computer. Click **OK** to continue.



11. After restarting, the program will finish installing and will show this final message to let you know you are done:



12. Click **OK** on this screen. You may now run BioDose 16.x by clicking on the desktop icon. The first time you run the program from any workstation it will ask you to register the software. The registration process is explained in greater detail on page 13. The first workstation to run BioDose after installation will complete the registration process for the entire facility. If you are adventurous, you can start setting up your databases. Information about getting started is on page 14.

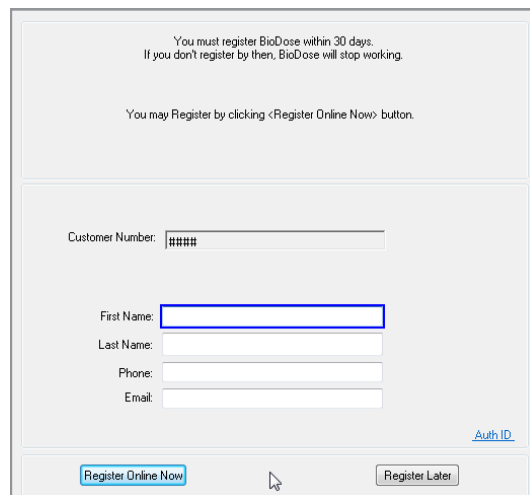
Software registration

What is BioDose registration?

The BioDose program requires an annual software registration for customer licensing validation. This is an internal tracking system that verifies that the software was installed in accordance within the license parameters. Once the notice appears, you will have 30 days to complete the registration process.

How do I register?

The first time you run BioDose you will see this screen:



You must register BioDose within 30 days.
If you don't register by then, BioDose will stop working.

You may Register by clicking <Register Online Now> button.

Customer Number: #####

First Name:

Last Name:

Phone:

Email:

[Auth ID](#)

There are two options to register your software:

1. If you have Internet access, complete the form and click **Register Online Now** to automatically register your BioDose program.
2. If you don't have Internet access, call us at 800-851-0025 Monday through Friday 8:00am - 6:00pm ET.

Can I register later?

Sure, you have up to 30 days to register. The next time you open BioDose the registration screen will come up again giving you another opportunity.

What happens next?

If you chose to register online now, then you are done. For those without Internet access, when you call we'll give you a number to enter into the Authorization ID box. Registration is independent of renewing your BioDose annual software support and does not guarantee that you are eligible for software support.

Setup instructions

Running the start-up wizard

If you have purchased either on-site or web-based training, we will work with you to build the databases in BioDose. If you are anxious to get started, you can run the startup wizard which will guide you through building the databases yourself. You can also use the wizard to add exams, radiopharmaceuticals or equipment at any time.

From the Main Menu
Click Help
Click Startup Wizard

Click on a topic in the list to begin. It is best to take the topics in order. Some topics depend on data from another section being complete. For example, dose calibrator constancy depends on both the dose calibrator and the sealed sources being available.

You can leave the wizard and come back at any time. BioDose will remember which topics you have already covered.

Need technical support?

We'll be happy to help you!

You can contact us Monday through Friday from 8:00 am - 6:00 pm ET.

Phone	1-800-851-0025
Fax	1-732-356-8746
email	support@ec2software.com

How about remote support?

When the going gets tough, two sets of eyes on the screen are better than one. We do have the ability to log into your computer with your permission so that we can look at the screens with you and work through the issues together. Give us a call first and your support representative will get you connected!